

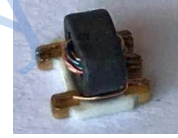
Features

- suitable for tin/lead and RoHS solder systems
- wideband, 3-800 MHz
- good return loss
- aqueous washable

Applications

- push-pull amplifier
- impedance matching

HT-TC4-1WG2+



50Ω 3 to 800 MHz

Electrical Specifications at 25°C

Ω RATIO	FREQUENCY (MHz)	INSERTION LOSS*		
		3 dB MHz	2 dB MHz	1 dB MHz
4	3-800	3-800	5-400	10-100

* Insertion Loss is referenced to mid-band loss, 0.8 dB typ.

Typical Performance Data at 25° C

FREQUENCY (MHz)	INSERTION LOSS (dB)	INPUT R. LOSS (dB)
3	1.09	11.58
4	0.98	12.35
5	0.93	13.11
7.5	0.86	14.21
10	0.83	14.49
100	0.88	15.77
250	0.96	16.17
400	1.13	16.72
600	1.36	15.59
800	2.21	9.07

Maximum Ratings

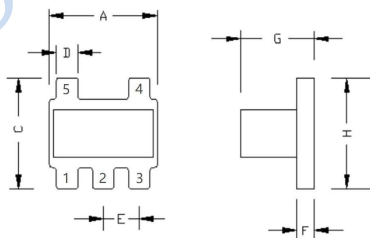
Operating Temperature	-20°C to 85°C
Storage Temperature	-55°C to 100°C
RF Power	0.25W
DC Current	30mA

Permanent damage may occur if any of these limits are exceeded.

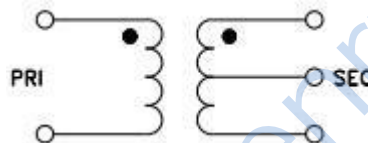
Pin Connections

PRIMARY DOT	4
PRIMARY	5
SECONDARY DOT	3
SECONDARY	1
SECONDARY CT	2

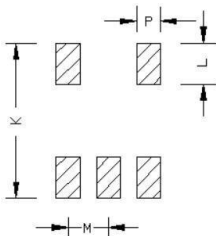
Outline Drawing



Config. A



PCB Land Pattern



Outline Dimensions (mm)

A	3.81	N	-
B	-	M	1.27
C	3.81	P	0.76
D	0.76	J	-
E	1.27	K	4.81
F	0.61	L	1.30
G	2.71	H	3.81
WT	0.16g		

