

Low Pass Filter

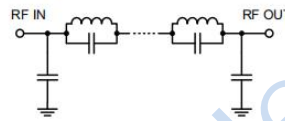
Features

- High rejection
- Sharp insertion loss roll off
- Excellent VSWR, 1.4:1 typ.@ passband
- Aqueous washable

Applications

- TV broad casting
- Wireless communications
- VHF/UHF receivers / transmitters
- Military

Functional Schematic



HT-RLP-290+



50Ω DC to 290 MHz

Electrical Specifications at 25°C

Parameter		Frequency(MHz)	Min.	Typ.	Max.	Unit
Pass Band	Insertion Loss	DC-290	-	1.2	1.8	dB
	Freq. Cut-Off	310	-	3.0	-	dB
	VSWR	DC-290	-	1.4	1.9	:1
Stop Band	Insertion Loss	350-1600	20	26	-	dB
	VSWR	350-1600	-	12	-	:1

Maximum Ratings

Operating Temperature	-40°C to 85°C
Storage Temperature	-55°C to 100°C
RF Power Input*	0.5 W Max. @ 25°C

Permanent damage may occur if any of these limits are exceeded.

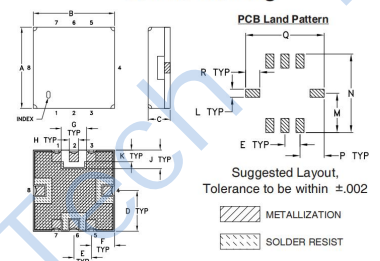
Typical Performance Data at 25°C

Frequency (MHz)	Insertion Loss (dB)	VSWR (:1)	Frequency (MHz)	Group Delay (nsec)
0.5	0.03	1.01	0.5	1.64
20.0	0.06	1.07	100.0	1.74
44.0	0.11	1.17	130.0	1.84
102.0	0.24	1.31	159.0	2.02
224.0	0.47	1.26	184.0	2.31
280.0	0.95	1.25	215.0	2.70
285.0	1.03	1.22	225.0	2.89
290.0	1.15	1.23	231.0	3.01
310.0	2.74	1.60	245.0	3.40
320.0	6.12	2.44	260.0	3.97
330.0	13.55	4.83	265.0	4.22
350.0	37.82	13.09	270.0	4.53
450.0	36.93	64.35	275.0	4.91
500.0	41.92	78.97	277.0	5.08
540.0	50.40	52.73	278.0	5.18
600.0	55.13	86.86	282.0	5.58
950.0	48.12	82.73	285.0	5.93
1000.0	43.62	78.97	286.0	6.06
1400.0	29.35	69.49	288.0	6.33
1600.0	26.12	57.91	290.0	6.64

Pin Connections

INPUT	2
OUTPUT	6
GROUND	1,3,4,5,7,8

Outline Drawing



Outline Dimensions (inch/mm)

A	B	C	D	E	F	G	H	J
.350	.350	.100	.175	.075	.100	.110	.040	.080
8.89	8.89	2.54	4.45	1.91	2.54	2.79	1.02	2.03
K	L	M	N	P	Q	R	wt.	
.050	.040	.195	.390	.120	.390	.070	grams	
1.27	1.02	4.95	9.91	3.05	9.91	1.78	0.25	

Suggested PCB Layout

