

Bandpass Filter

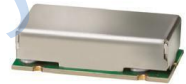
Features

- Good VSWR, 1.6:1 typical in passband
- High rejection, 65 dB typical
- Sharp insertion loss roll off
- Shielded case
- Aqueous washable

Applications

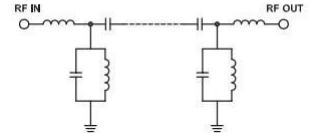
- Harmonic rejection
- Transmitters / receivers
- ILS / Localiser
- Radio communications

HT-BPF-B59+

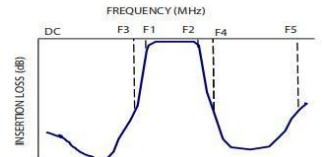


50Ω 57 to 61 MHz

Functional Schematic



Typical Frequency Response



Maximum Ratings

Operating Temperature -40°C to 85°C

Storage Temperature -55°C to 100°C

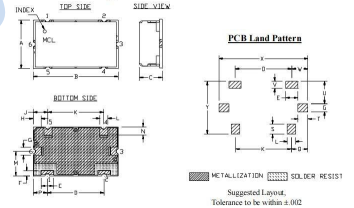
RF Power Input* 0.8W max.

Permanent damage may occur if any of these limits are exceeded.

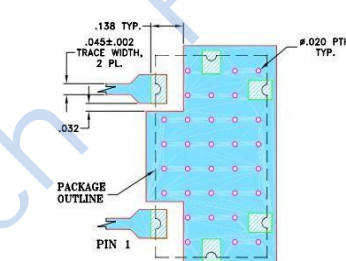
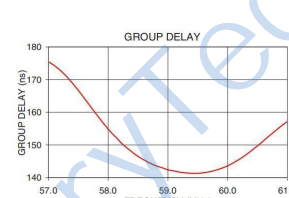
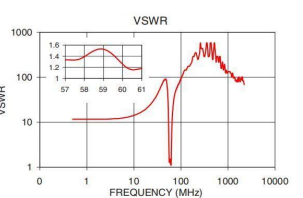
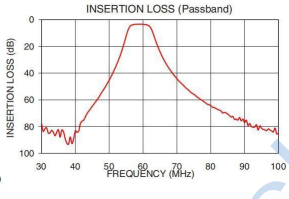
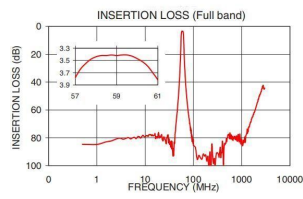
Pad Connections

INPUT	1
OUTPUT	2
GROUND	3,4,5,6

Outline Drawing



Demo Board MCL PIN: TB-400
Suggested PCB Layout (PL-247)



- NOTES:
1. TRACE WIDTH IS SHOWN FOR FR4 WITH DIELECTRIC THICKNESS .025±.002". COPPER: 1/2 OZ. EACH SIDE. FOR OTHER MATERIALS TRACE WIDTH MAY NEED TO BE MODIFIED.
 2. BOTTOM SIDE OF THE PCB IS CONTINUOUS GROUND PLANE.
- DENOTES PCB COPPER LAYOUT WITH SMOBC (SOLDER MASK OVER BARE COPPER)
■ DENOTES COPPER LAND PATTERN FREE OF SOLDERMASK

Outline Dimensions: Unit (mm)					
A	11.99	B	20.98	C	5.59
D	14	E	3	F	1.19
G	1.98	H	1.92	J	3.61
K	13.79	L	1.98	M	5.99
N	2.01	P	3.51	Q	4.11
S	2.49	T	2.44	U	5.51
V	1.70	W	3.99	X	22
WT		6.0	Y	13	