

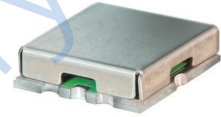
## Features

- low insertion loss, 0.3dB typ. @ passband
- high rejection
- shielded case
- aqueous washable

## Applications

- transmitters / receivers
- sub-harmonic rejection
- military communications

## HT-RHP-73+



50Ω 140 to 2000 MHz

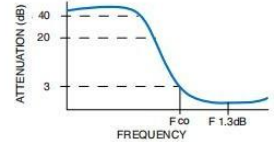
### Electrical Specifications (T<sub>AMB</sub>= 25° C)

STOP BAND (MHz)		FCO, (MHz) Nom.	PASS BAND (MHz)	VSWR (:1)	
(Loss > 40dB)		(Loss 3dB)	(Loss < 1dB)	Stopband Typ.	Passband Typ.
DC-42	DC-55	73	140-2000	18	1.2

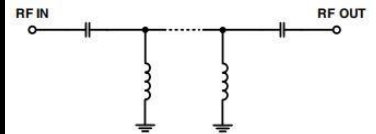
### Typical Performance Data at 25° C

Frequency (MHz)	Insertion Loss (dB)	VSWR (:1)
0.5	84.79	2823.13
10	84.19	1737.18
20	81.19	921.27
30	76.77	356.09
42	48.28	114.28
55	27.25	36.72
62	16.65	17.55
69	6.80	4.89
73	3.19	2.06
85	1.27	1.41
110	0.65	1.04
140	0.47	1.16
250	0.24	1.06
750	0.22	1.10
500	0.21	1.10
1000	0.25	1.12
1400	0.31	1.18
2000	0.41	1.25

### Typical Frequency Response



### Functional Schematic



### Pin Connections

INPUT	2
OUTPUT	6
GROUND	1, 3, 4, 5, 7, 8

### Maximum Ratings

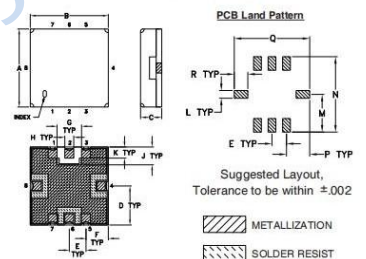
Operating Temperature -40°C to 85°C

Storage Temperature -55°C to 100°C

RF Power Input\* 0.5W max. at 25°C

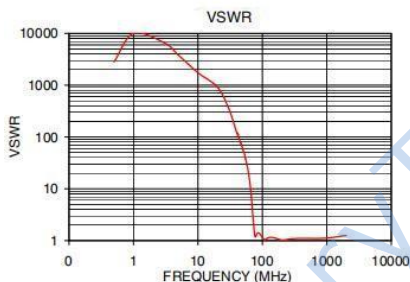
Permanent damage may occur if any of these limits are exceeded.

### Outline Drawing

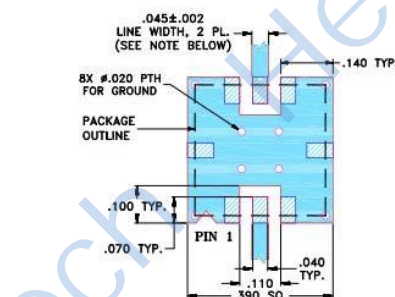


### Outline Dimensions: Unit (mm)

A	8.89	B	8.89	C	2.54
D	4.45	E	1.93	F	2.54
G	2.79	H	1.02	J	2.03
K	1.27	L	1.02	M	4.95
N	9.91	P	3.05	Q	9.91
WT		R	1.78		



### Demo Board MCL P/N: TB-332 Suggested PCB Layout (PL-176)



#### NOTES:

1. TRACE WIDTH IS SHOWN FOR FR4 WITH DIELECTRIC THICKNESS .025" ± .002"; COPPER: 1/2 OZ. EACH SIDE. FOR OTHER MATERIALS TRACE WIDTH MAY NEED TO BE MODIFIED.
  2. BOTTOM SIDE OF THE PCB IS CONTINUOUS GROUND PLANE.
-