

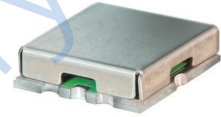
Features

- low insertion loss, 0.3dB typ. @ passband
- high rejection
- shielded case
- aqueous washable

Applications

- transmitters / receivers
- sub-harmonic rejection
- military communications

HT-RHP-147+



50Ω 250 to 3000 MHz

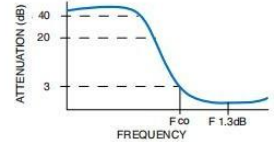
Electrical Specifications (T_{AMB}= 25° C)

STOP BAND (MHz)		FCO, (MHz)	PASS BAND (MHz)	VSWR (:1)	
(Loss > 40dB)		Nom.	(Loss < 1dB)	Stopband Typ.	Passband Typ.
(Loss > 20dB)		(Loss 3dB)			
DC-80	DC-105	147	250-3000	18	1.2

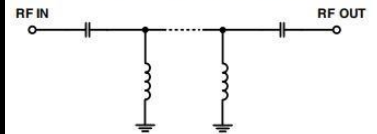
Typical Performance Data at 25° C

Frequency (MHz)	Insertion Loss (dB)	VSWR (:1)
1.0	89.38	750.48
10	89.79	2784.52
50	77.52	334.16
80	47.98	99.04
105	28.76	42.62
120	18.18	23.01
132.5	9.87	9.96
140	5.65	4.92
147	2.98	2.56
153	1.77	1.64
180	0.82	1.17
250	0.46	1.15
500	0.28	1.13
700	0.24	1.07
1000	0.25	1.01
2000	0.39	1.27
2500	0.47	1.32
3000	0.51	1.28

Typical Frequency Response



Functional Schematic



Pin Connections

INPUT	2
OUTPUT	6
GROUND	1, 3, 4, 5, 7, 8

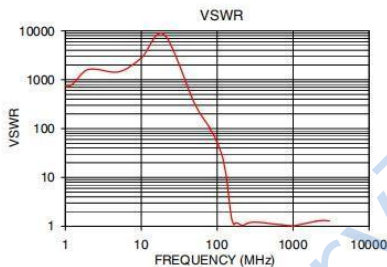
Maximum Ratings

Operating Temperature -40°C to 85°C

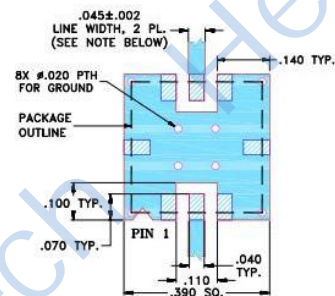
Storage Temperature -55°C to 100°C

RF Power Input* 0.5W max. at 25°C

Permanent damage may occur if any of these limits are exceeded.



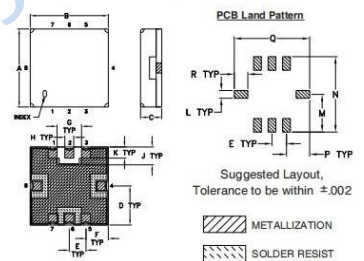
Demo Board MCL P/N: TB-332 Suggested PCB Layout (PL-176)



NOTES:

1. TRACE WIDTH IS SHOWN FOR FR4 WITH DIELECTRIC THICKNESS .025" ± .002"; COPPER: 1/2 OZ. EACH SIDE. FOR OTHER MATERIALS TRACE WIDTH MAY NEED TO BE MODIFIED.
 2. BOTTOM SIDE OF THE PCB IS CONTINUOUS GROUND PLANE.
-

Outline Drawing



Outline Dimensions: Unit (mm)

A	8.89	B	8.89	C	2.54
D	4.45	E	1.93	F	2.54
G	2.79	H	1.02	J	2.03
K	1.27	L	1.02	M	4.95
N	9.91	P	3.05	Q	9.91
WT		R	1.78		