

## H3-TCP-2-10+

5-1000MHz 50Ω 2 Way Power Divider

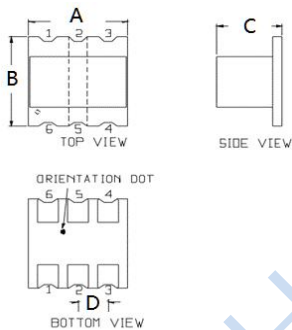
### APPLICATIONS

- Ideally suitable for CATV applications.

### FEATURES

- Surface mount
- 2 Way 0 degree
- 260°C reflow compatible
- RoHS compliant and Pb free
- Available on tape and reel

### DIMENSIONS

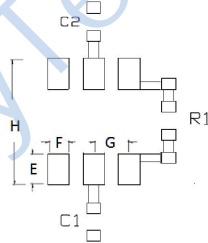


| A    | B    | C    |
|------|------|------|
| 4.30 | 4.30 | 3.00 |
| D    |      |      |
| 1.27 |      |      |

Unless otherwise stated dimensions are in mm

Tolerance: .xx ± 0.25, .xxx ± 0.05

### PCB LAYOUT



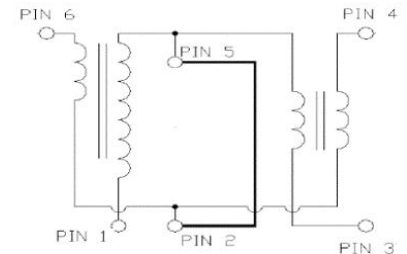
Suggest:

C1, C2=0.5pF

R1=100Ω

| E    | F    | G    |
|------|------|------|
| 1.40 | 0.76 | 1.27 |
| H    |      |      |
| 4.83 |      |      |

### FUNCTIONAL SCHEMATIC



### PIN CONFIGURATION

| Pin No. | Function                  |
|---------|---------------------------|
| 1       | Ground                    |
| 2       | External 0.5 pF Capacitor |
| 3       | Output 2                  |
| 4       | Output 1                  |
| 5       | External 0.5 pF Capacitor |
| 6       | Input                     |

### ELECTRICAL SPECIFICATIONS@25°C:

| Parameters (P#: ENA PORT) | frequency band | Min. | Typ. | Max. | Unit |
|---------------------------|----------------|------|------|------|------|
| Port Impedance, Z0        |                |      | 50   |      | Ohm  |
| Insertion Loss(Above 3dB) | 5-1000MHZ      |      | 0.6  | 1.0  | dB   |
| VSWR                      | 5-1000MHZ      |      | 1.1  | 1.5  | dB   |
| Isolation                 | 5-1000MHZ      | 16.0 | 18.0 |      | dB   |
| Amplitude Balance         | 5-1000MHZ      |      | 0.4  | 1.0  | dB   |
| Phase Balance             | 5-1000MHZ      |      | 2    | 15   | Deg  |

### ABSOLUTE MAXIMUM RATINGS

| Parameter                   | Value       |
|-----------------------------|-------------|
| Input RF Power              | 1W Max      |
| Internal Load Dissipation   | 0.125W Max  |
| Operating Temperature Range | -40 to 85°C |

## TEST CURVE

