

H3-TC4-19+

10-1900MHz 50Ω 1:4 Balun

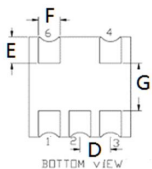
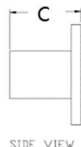
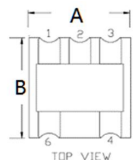
APPLICATIONS

- Ideally suitable for PCS, wideband push-pull amplifiers and cellular applications.

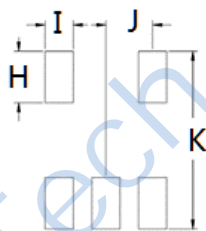
FEATURES

- Surface mount
- Impedance ratio: 1:4
- Balanced transmission line
- RoHS compliant
- 260°C reflow compatible

DIMENSIONS



Land Pattern



A	B	C	D	H	I	J
4.21	4.21	2.70	1.27	1.40	0.76	1.27
E	F	G		K		
1.11	0.90	2.00		4.83		

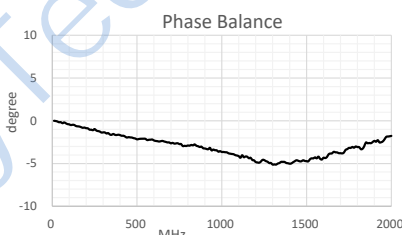
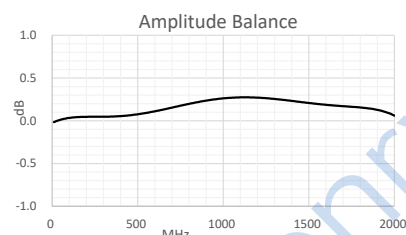
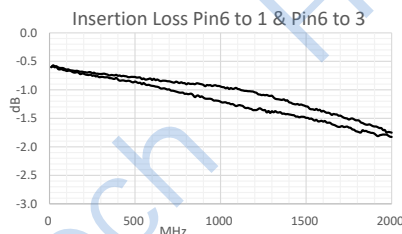
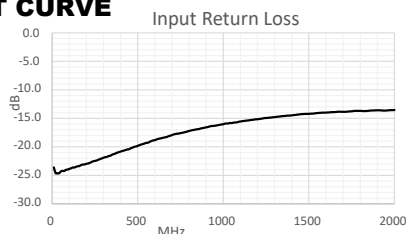
Unless otherwise stated dimensions are in mm

Tolerance: .xx ± 0.25, .xxx ± 0.05

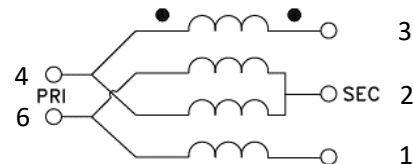
ELECTRICAL SPECIFICATIONS@25°C:

Parameters (P#: ENA PORT)	frequency band	Min.	Typ.	Max.	Unit
Port Impedance, Z0 (P1 / P2 / P3)			50		Ohm
Insertion Loss	10-200MHz		0.7	1.0	dB
	200-1000MHz		1.3	2.0	dB
	1000-1900MHz		1.7	3.0	dB
Phase Balance	10-1900MHz		4.0	6.0	Deg
Amplitude Balance	10-1900MHz		0.4	2.0	dB
Return Loss	10-200MHz	16.0	23.0		dB
	200-1000MHz	7.0	16.0		dB
	1000-1900MHz	5.0	13.0		dB

TEST CURVE



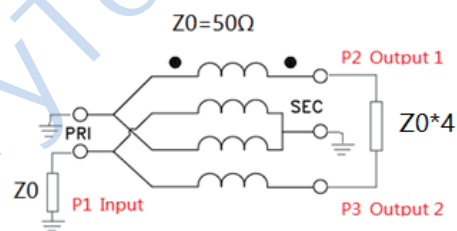
FUNCTIONAL SCHEMATIC



PIN CONFIGURATION

Pin No.	Function
1	Secondary
2	Secondary CT(Ground)
3	Secondary Dot
4	Primary(Ground)
6	Primary Dot

APPLICATION & TEST CIRCUIT



ABSOLUTE MAXIMUM RATINGS

Parameter	Value
Operating Temperature Range	0 to 85°C
Storage Temperature Range	-40 to 85°C

Tel: +86-28-85589664

E-mail: mr_li@henglitaitech.com

Web: www.hltchips.com

Adress:No.198 Tianqin East Street, Gaoxin West District, Chengdu City