

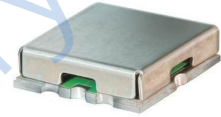
Features

- low insertion loss, 0.3dB typ. @ passband
- high rejection
- shielded case
- aqueous washable

Applications

- transmitters / receivers
- sub-harmonic rejection
- military communications

HT-RHP-395+



50Ω 650 to 2750 MHz

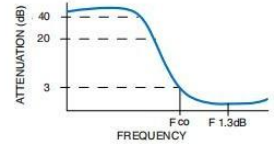
Electrical Specifications (T_{AMB}= 25° C)

STOP BAND (MHz)		FCO, (MHz) Nom.	PASS BAND (MHz)	VSWR (:1)	
(Loss > 40dB)		(Loss > 20dB)	(Loss < 1dB)	Stopband Typ.	Passband Typ.
DC-210	DC-290	395	650-2750	18	1.2

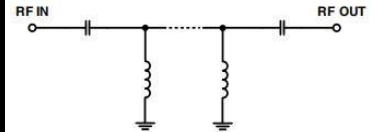
Typical Performance Data at 25° C

Frequency (MHz)	Insertion Loss (dB)	VSWR (:1)
1.0	87.12	1118.54
50	92.26	3204.06
100	80.83	725.01
207	50.78	139.37
210	49.95	133.36
280	31.20	61.88
290	28.60	53.41
320	20.79	35.83
350	13.01	18.89
370	8.33	8.21
395	3.48	3.51
410	1.88	2.14
470	0.71	1.18
650	0.47	1.25
1000	0.39	1.26
1500	0.33	1.07
2250	0.40	1.16
2750	0.46	1.22

Typical Frequency Response



Functional Schematic



Pin Connections

INPUT	2
OUTPUT	6
GROUND	1, 3, 4, 5, 7, 8

Maximum Ratings

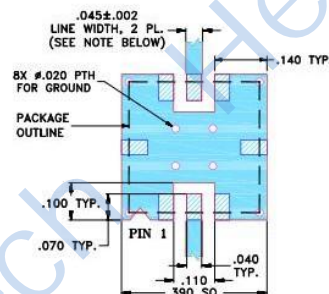
Operating Temperature -40°C to 85°C

Storage Temperature -55°C to 100°C

RF Power Input 0.5W at 25°C

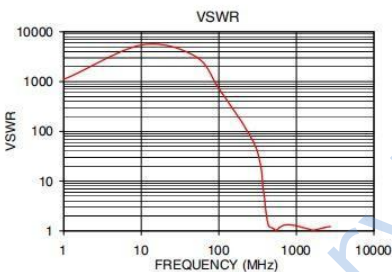
Permanent damage may occur if any of these limits are exceeded.

Demo Board MCL P/N: TB-332 Suggested PCB Layout (PL-176)

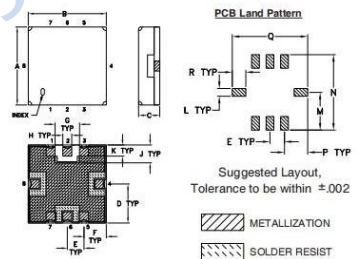


NOTES:

1. TRACE WIDTH IS SHOWN FOR FR4 WITH DIELECTRIC THICKNESS .025" ± .002"; COPPER: 1/2 OZ. EACH SIDE. FOR OTHER MATERIALS TRACE WIDTH MAY NEED TO BE MODIFIED.
 2. BOTTOM SIDE OF THE PCB IS CONTINUOUS GROUND PLANE.
-



Outline Drawing



Outline Dimensions: Unit (mm)

A	8.89	B	8.89	C	2.54
D	4.45	E	1.93	F	2.54
G	2.79	H	1.02	J	2.03
K	1.27	L	1.02	M	4.95
N	9.91	P	3.05	Q	9.91
WT			0.25	R	1.78