

Bandpass Filter

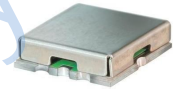
Features

- good VSWR, 1.5:1 typ. @ passband
- small size 0.35" x 0.35"
- shielded case
- aqueous washable

Applications

- harmonic rejection
- transmitters / receivers
- navigation

HT-RBP-400+



50Ω 292 to 490 MHz

Bandpass Filter Electrical Specifications (T_{AMB}= 25°C)

CENTER FREQ. (MHz)	PASSBAND (MHz) (Loss < 4dB)	STOPBAND (MHz)				VSWR		
		(Loss > 20dB)		(Loss > 35dB)		Passband		Stopband
F _c	F ₁ - F ₂	F ₃	F ₄	F ₅	F ₆	Typ.	Max.	Typ.
391	292-490	230	620	200	700-2000	1.5	2.3	18

Maximum Ratings

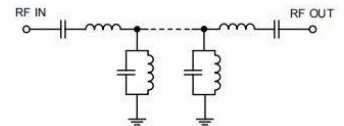
Operating Temperature -40°C to 85°C

Storage Temperature -55°C to 100°C

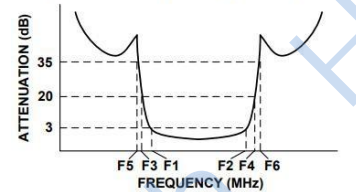
RF Power Input* 0.5 W at 25°C

Permanent damage may occur if any of these limits are exceeded.

Functional Schematic



Typical Frequency Response



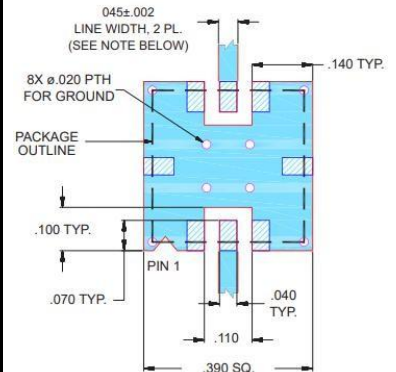
Typical Performance Data at 25° C

Frequency (MHz)	Insertion Loss (dB)	VSWR (:1)
0.3	96.06	1737.18
200	40.54	115.81
230	27.24	49.64
252	16.05	18.50
267	8.01	6.11
277	3.93	2.45
292	1.86	1.16
300	1.62	1.15
391	1.15	1.25
400	1.16	1.27
490	1.84	1.48
518	3.85	2.91
535	7.85	6.58
560	15.13	16.72
620	28.98	43.44
700	41.02	69.49
1400	76.67	86.86
2000	70.80	62.05

Pad Connections

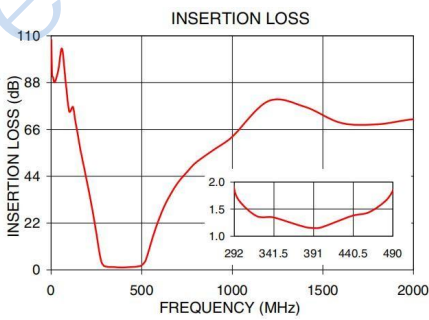
RF IN	2
RF OUT	6
GROUND	1, 3, 4, 5, 7, 8

Demo Board MCL P/N: TB-332 Suggested PCB Layout (PL-176)

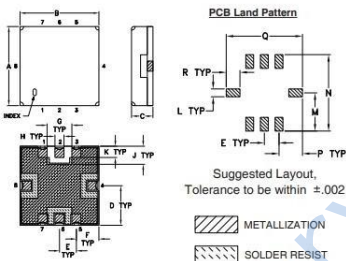


NOTES:

1. TRACE WIDTH IS SHOWN FOR FR4 WITH DIELECTRIC THICKNESS .025 ± .002; COPPER: 1/2 OZ. EACH SIDE. FOR OTHER MATERIALS TRACE WIDTH MAY NEED TO BE MODIFIED.
 2. BOTTOM SIDE OF THE PCB IS CONTINUOUS GROUND PLANE.
-



Outline Drawing



Outline Dimensions: Unit (mm)

A	8.89	B	8.89	C	2.54
D	4.45	E	1.91	F	2.54
G	2.79	H	1.02	J	2.03
K	1.27	L	1.02	M	4.95
N	9.91	P	3.05	Q	9.91
R	1.78	wt	0.25		